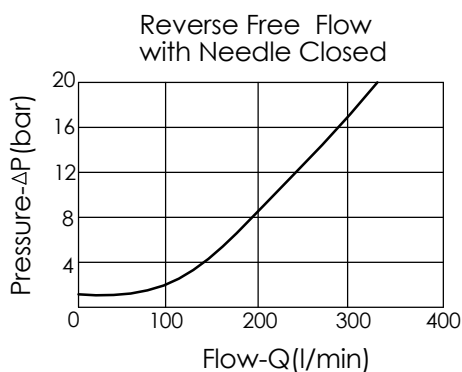
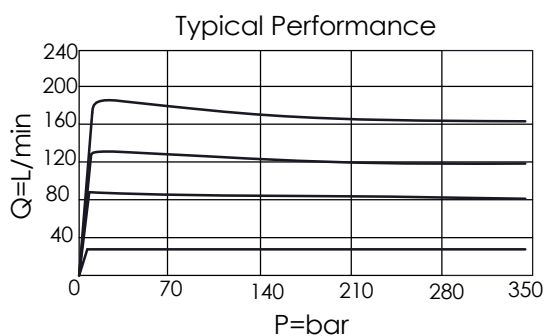


TECHNICAL DATA

Max. pressure:	350	bar
Rated flow:	200	l/min
Cavity-Tooling:	18A-2	
Installation torque:	465-500	Nm
Weight:	1.22	kg

Accurate pressure compensated control requires that a 200 psi (14 bar) minimum pressure differential be maintained across the valve.



X OPERATION

20 Standard Type

Y FLOW SETTING

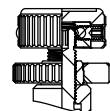
A 1.0 to 200 LPM

Z OPTIONS

L Leakproof hex. socket screw.



K Handknob with Lock Knob.



T Three-winged Handknob Kit.

