

Ordering Code: **RD-10A-X-Y-Z**

Control Option:  
Maximum extension  
from locating shoulder.  
(L Control shown)

Ø19

22.2 Hex.  
(7/8 inch)

M20x1.5

Outlet ②

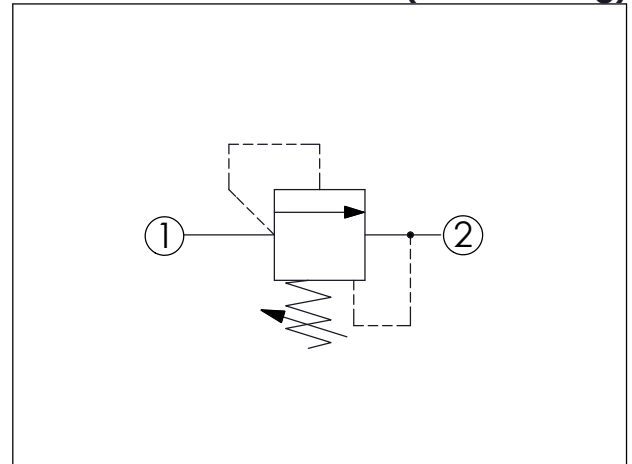
Inlet ①

57

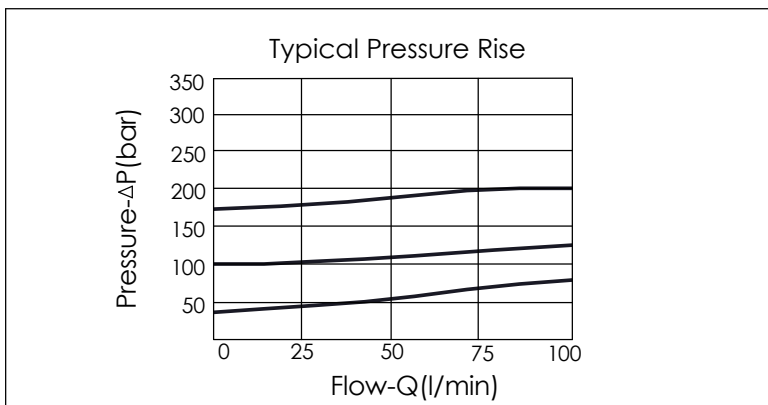
39

Locating  
Shoulder

UNIT:mm



TECHNICAL DATA		
Max. Setting:	420	bar
Rated flow:	95	l/min
Cavity-Tooling:	10A-2	
Installation torque:	40-50	Nm
Weight:	0.17	kg
Will accept maximum pressure at port 2; suitable for use in cross port relief circuits.		



X	OPERATION	
25	Direct Acting 1 to 2 (P to T)	
Response Time-Typical (2 ms) Maximum Leakage (0.7 cc/min.) Dirt tolerant		

Y	PRESSURE SETTING	
A	35-210 bar (70 bar Standard Setting)	
B	20-105 bar (70 bar Standard Setting)	
C	70-420 bar (70 bar Standard Setting)	
D	14-55 bar (28 bar Standard Setting)	
E	10-28 bar (14 bar Standard Setting)	
S	3.5-14 bar (7 bar Standard Setting)	
W	55-315 bar (70 bar Standard Setting)	

Z	OPTION	
L	Leakproof hex. socket screw.	
LP	Leakproof hex. socket screw. With stainless steel external metal components	