

## COUNTERBALANCE VALVE (Without Pilot Assist, 3 Port Cavity)

Ordering Code: **CB-11A-X-Y-Z**

Turn screw clockwise to reduce setting and release load.

Control Option: Maximum extension from locating shoulder. (L Control shown)

Without Pilot Assist (3)

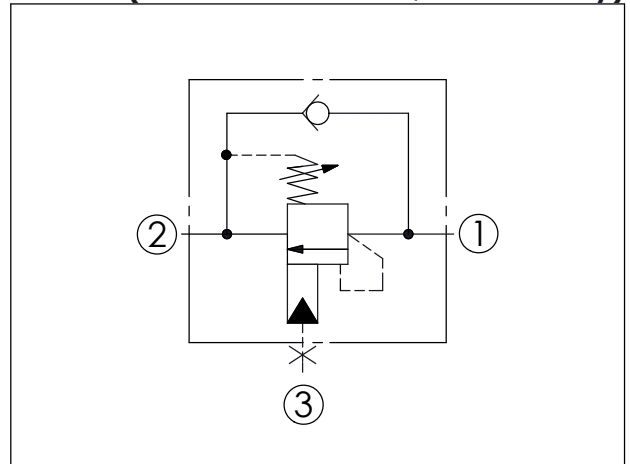
M20x1.5

Valve (2)

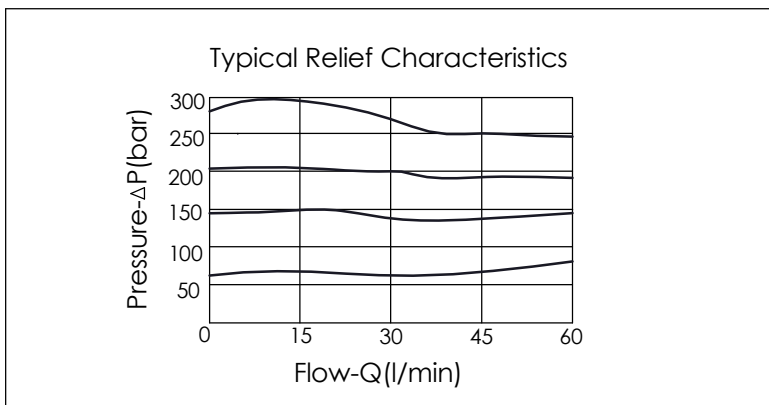
Load (1)

Locating Shoulder

UNIT:mm



TECHNICAL DATA		
Max. Setting:	280	bar
Rated flow:	60	l/min
Cavity-Tooling:	11A-3	
Installation torque:	40-50	Nm
Weight:	0.15	kg
Pressure Setting:		
Setting should be 1.3 times maximum load induced pressure.		



X	PILOT RATIO	
23	Without Pilot Assist, 3 Port Cavity	

Y	SPRINGS	
ADJUSTMENT RANGES (2 bar Cracking Pressure)		
H	70 to 280 bar	(210 bar Standard Setting)
I	25 to 105 bar	(70 bar Standard Setting)
SPECIAL PURPOSES (0.3 bar Cracking Pressure)		
A	70 to 280 bar	(210 bar Standard Setting)
B	25 to 105 bar	(70 bar Standard Setting)
C	140 to 350 bar	(210 bar Standard Setting)
E	16 to 55 bar	(25 bar Standard Setting)

Z	OPTIONS	
L	Leakproof hex. socket screw.	
C	Stainless Steel Tamper Resistant Cover.	